



# Fi reVi ewer Sui te

**FireViewer Suite Installation Manual and User's Guide**

***firepad***



Firepad, Inc

Information in this document is subject to change without notice. No part of this document may be reproduced or transmitted in any form or by any means, electronic or mechanical, for any purpose, without the express written permission of Firepad, Inc ("Firepad").

© 2001 Firepad, Inc. All rights reserved.

Firepad, FireConverter, FireConduit and FireViewer are either registered trademarks or trademarks of Firepad, Inc. in the United States and/or other countries.

Firepad may have patents or pending patent applications, trademarks, copyrights or other intellectual property rights covering subject matter in this document. The furnishing of this document does not give you any license to these patents, trademarks, copyrights or other intellectual property rights except as expressly provided in any written license agreement from Firepad.

Palm, Palm Computing Platform and HotSync are trademarks of Palm, Inc.  
Sony and CLIE are trademarks of Sony Ltd.  
Handspring, Visor and Prism are trademarks of Handspring, Inc.  
TRG and TRGPro are trademarks of TRG, Inc.

# Contents

<b>I. Introduction</b>	<b>5</b>
About Firepad	6
What you get	6
System requirements	6
Handheld devices supported	7
<b>II. Installing FireViewer Suite</b>	<b>8</b>
InstallShield	9
Start FireViewer Suite	10
<b>III. Using FireConverter</b>	<b>11</b>
Convert Image	12
Convert Video	13
Convert URL	15
<b>IV. Using FireViewer</b>	<b>17</b>
InstallShield	18
Get Started	18
Main View	18
Main View Menu Items	18
View Images	21
View Hypertext Documents	22
View Videos	23

Where to Find Images on the Internet	23
Create Custom Maps for FireViewer from the Internet	24
<b>V. Appendixes</b>	<b>25</b>
<b>A. FHTML Specification</b>	<b>26</b>
FHTML support in FirePublisher 1.0	26
Paragraphs	26
Line Breaks	26
Ordered and Unordered Lists	26
Hyperlinks	27
Images	27
Image Maps	28
Frames	28
Title	29
Base	29
Entities	29
Other non-recognized tags	29
<b>B. FireViewer 5.2 and above Notes</b>	<b>30</b>
Internet and FireViewer 5.2	30
Palm VII or VIIx and FireViewer 5.2	30
Memory Card and FireViewer5.2	30
<b>C. Support</b>	<b>32</b>

## I. Introduction

FireViewer Suite for windows combines FireViewer for your PalmOS device and FireConverter, the desktop companion. FireViewer is an integrated minibrowser, video player and document viewer. It is the only program of its kind to support high-definition graphics that you can zoom and scroll in real-time. Our compression algorithms keep file sizes small without affecting the performance of the viewer. You can also surf the wireless web with FireViewer, keep bookmarks, get maps and watch streaming video. FireViewer also supports external memory for SD cards, MemoryStick, and the new TRG compact flash. FireViewer Suite can help you put anything from family photos to technical documents, medical images to training video, Wall Street Journal to construction blueprints - all on your Palm.

FireConverter for windows is the desktop program that converts large images from popular graphics formats (JPEG, GIF, TIFF, BMP and PNG) to FireViewer images and AVI and MOV files into FireViewer videos. Convert a whole web sites or HTML documents and keep them HotSynced everyday.

- About Firepad
- What you get
- System requirements
  - Handheld devices supported

## About Firepad

Founded in 1997, Firepad is based in the heart of Silicon Valley. As a pioneer in the delivery of multimedia to handheld devices, Firepad has the de facto standard for two-dimensional large images, videos and text on the Palm Computing Platform. Our award-winning technology is used by manufacturing businesses from automobiles to aerospace, medical industry, security and surveillance, architecture engineering and construction, real estate, travel, publishers, document-intensive organizations, original equipment manufacturers, business users and consumers and is endorsed by leading enterprises worldwide.

Our products include FireProducer, FirePublisher and FireViewer Suite.

Firepad, Inc.

The Firepad Building

625 Ellis Street, Suite 100

Mountain View, CA 94043

## What you get

- FireConverter 6.x for image, video & URL conversion
- FireViewer 6.x for PalmOS handheld
- Link to online manual
- Sample images, video and web page files
- The ability to convert and HotSync graphics, videos and webpages out to handheld devices.

## System requirements

The following is required to run FireViewer Suite.

- Windows 95/98/NT/2000/ME

**Handheld devices supported:**

All Palm OS devices, including units from Franklin Covey Co., Hand-spring, IBM, Palm, Qualcomm, Sony, Supra Products, Symbol Technologies, TRG Products and QUALCOMM, running PalmOS v.3.0 or later releases.

## II. Installing FireViewer Suite

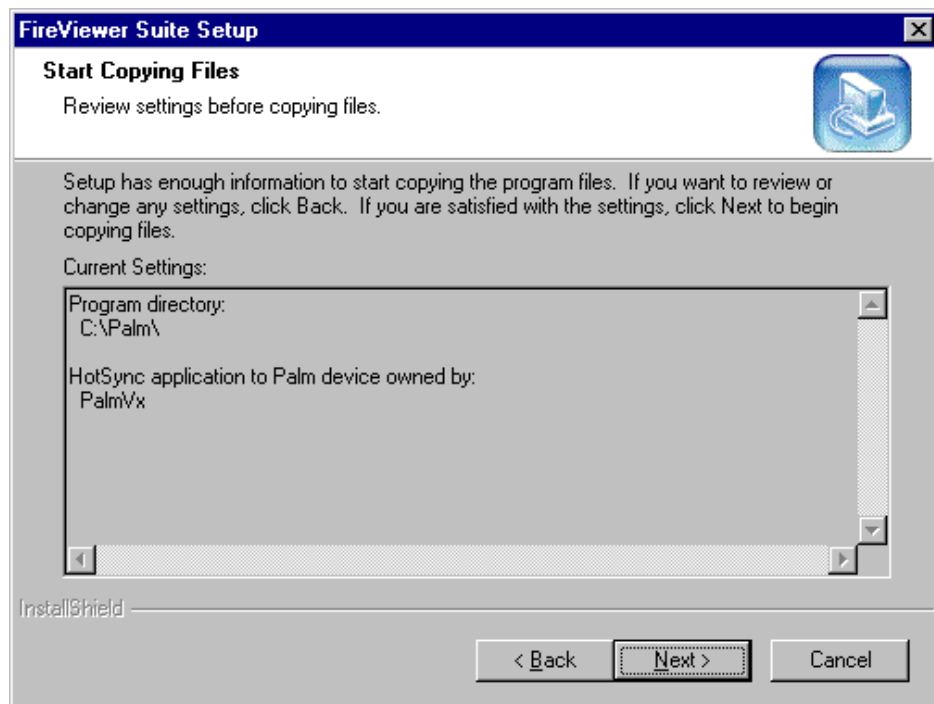
This section contains information on installing and using FireViewer Suite on your system. Install FireViewer on your PalmOS device. Run FireConverter on your PC to begin converting images, videos and web pages to HotSync to your handheld.

- ❑ InstallShield
- ❑ Start FireViewer Suite

## InstallShield

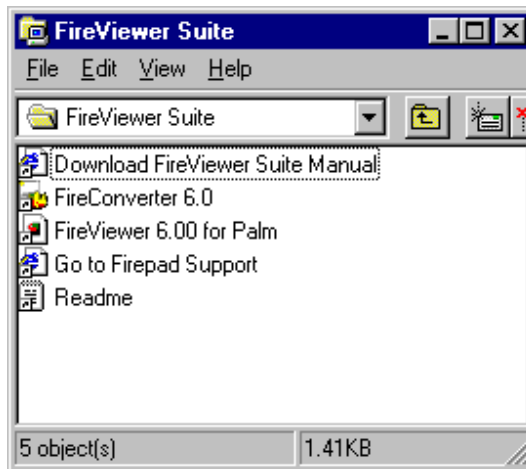
Note: You must first uninstall any older versions of FireViewer Suite that you have on your system.

InstallShield guides you through installing FireViewer Suite on your computer. During the installation you will be asked to select a palm username. This will automatically place FireViewer and sample content in that user's install tool in the Palm Desktop software. After installation is complete, the next time you HotSync, they will be installed on the handheld device.



## Start FireViewer Suite

FireViewer Suite can be opened from the folder where you downloaded it to or conveniently from the Start Menu/ Programs/Firepad/FireViewer Suite.



## III. Using FireConverter

FireConverter is the desktop program that converts large images from popular graphics formats (JPEG, GIF, TIFF, BMP and PNG) to FireViewer images and AVI and MOV files into FireViewer videos. Convert web sites or HTML documents and keep them HotSynced everyday.

- Convert Image
- Convert Video
- Convert URL

## Convert Image

Open FireConverter 6.x.

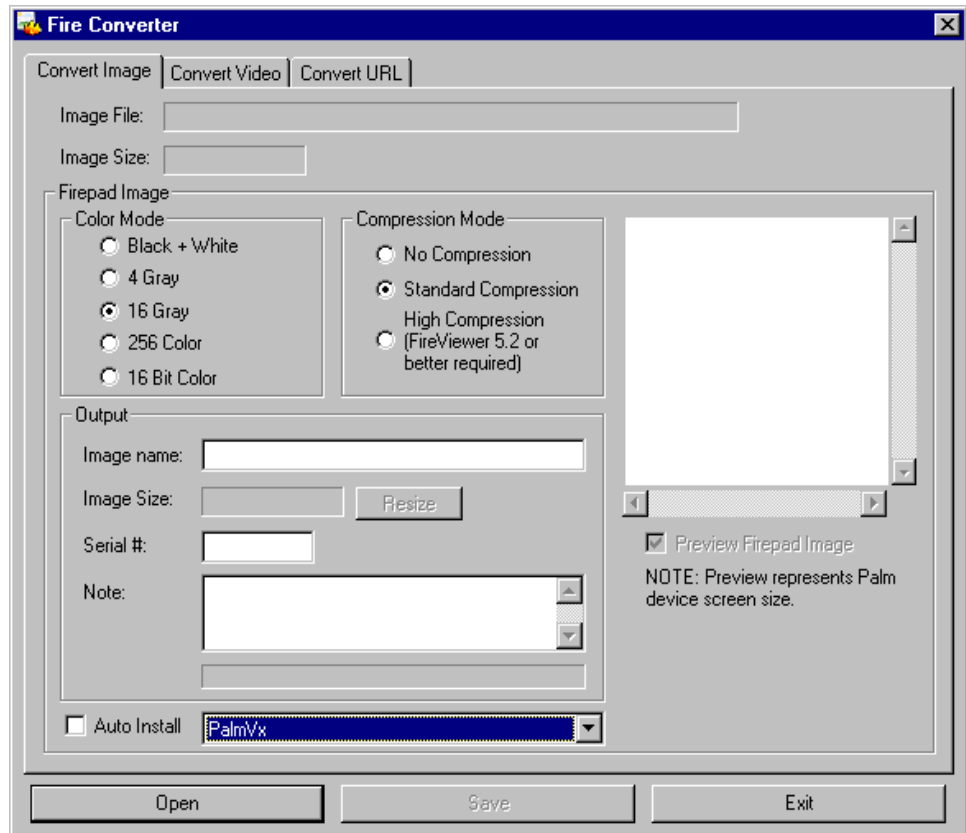
Select the Convert Image tab.

There are three ways to select an image for conversion. Click the open button located on the bottom left to browse your directories for the image to convert. You may drag and drop files to convert. Or if FireConverter is not open, you can right click on the image, select FireConverter from the menu to open FireConverter. File types that may be converted are JPEG, GIF, TIFF, BMP and PNG.

The size of the source image is entered automatically. You may choose the appropriate color mode and compression mode.

Note: the highest compression requires FireViewer 5.2 or above on the PalmOS handheld.

In the output section you may enter a name for the image that will appear



as the name of the file in FireViewer.

Resize shows a comparison of the palm screen size to the image size. You may adjust it as desired by choosing a different percent.

The serial number feature is used by developers only.

Include any notes you want with your image in the note box. These notes can be found in the details when viewing an image in FireViewer.

As a time saving technique, check the Auto install box and choose a user name, if there are more than one, to have the image automatically placed in the install tool in the palm Desktop software for fast and convenient HotSyncing.

Check the preview box to see what the converted image will look like.

When you are ready to convert, click the Save button located at the bottom center of the FireConverter window. The converted image will be saved as a .pdb. You may chose a filename and a folder or accept the defaults.

Click exit on the bottom right when you are done converting images, or choose another tab to do other conversions.

## **Convert Video**

Open FireConverter 6.x.

Select the Convert Video tab.

There are three ways to select a video for conversion. Click the open button located on the bottom left to browse your directories for the video to convert. You may drag and drop files to convert. Or, if FireConverter is not open, right click on the video name, then select FireConverter from the pull down menu to open FireConverter. VideoConverter converts .AVI and .MOVformats.

Since VideoConverter uses the standard windows .avi support, which is an older format, it can only convert these types of avi. While you are in windows explorer, right click on the video, select properties and then select the details tab. If there is information displayed about the 'video format' then you can convert it to FireViewer format. If there is instead a message that says something about bad format, Video Converter cannot convert it.

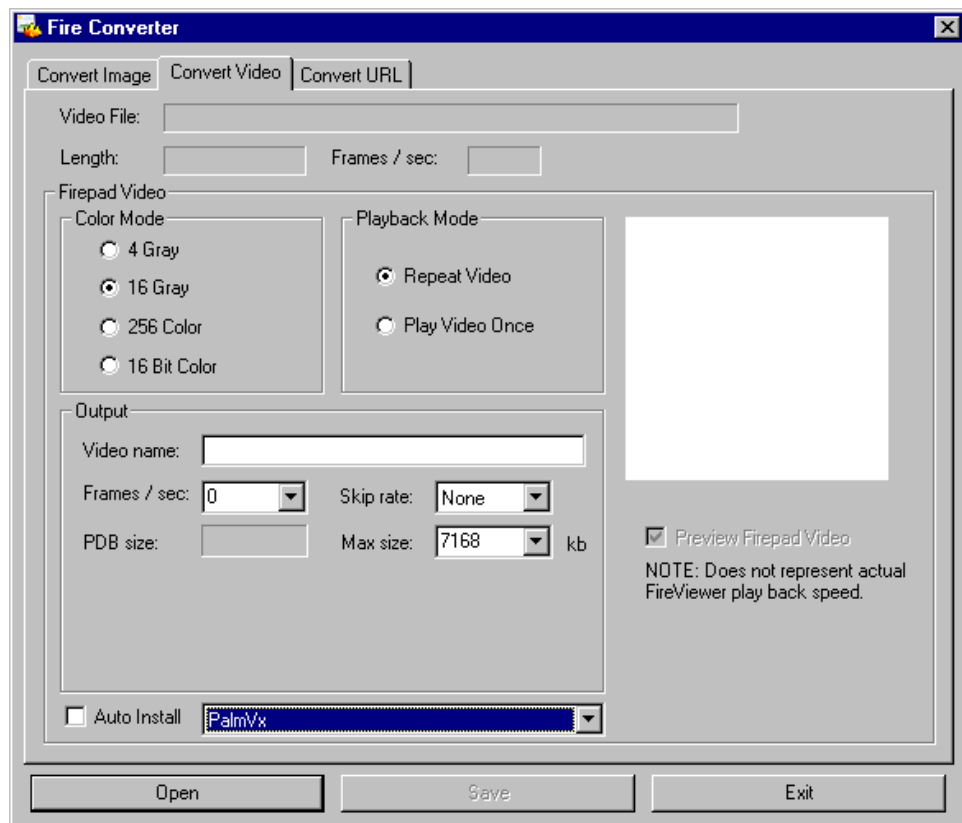
Once you have selected a file, the length of the source video and the frames/sec will be displayed.

Next chose your desired color mode and playback mode. The playback mode allows your video to continuously repeat or play one time only.

In the output section you may enter a name for the video that will appear as the name of the file in FireViewer.

Select from the options in the pull down menus to set the frames/sec., the skip rate and max size. The frames/sec. are set in multiples based on the frames/sec. of the source video. Skip rate determines the rate of rewind and fast forward. Use the hardware's scroll up and down buttons to rewind and fast forward when viewing a video in FireViewer.

Check the preview box to view a preview, which will only display during the conversion.



As a time saving technique, check the Auto install box and choose a user name, if there are more than one, to have the video automatically placed in the install tool for fast and convenient HotSyncing.

When you are ready to convert, click the Save button located in the bottom center of the FireConverter window. The converted video will be saved as a .pdb and you will see the PDB size. You may choose a filename and a folder or accept the defaults.

Click exit on the bottom right when you are done converting videos, or choose another tab to do other conversions.

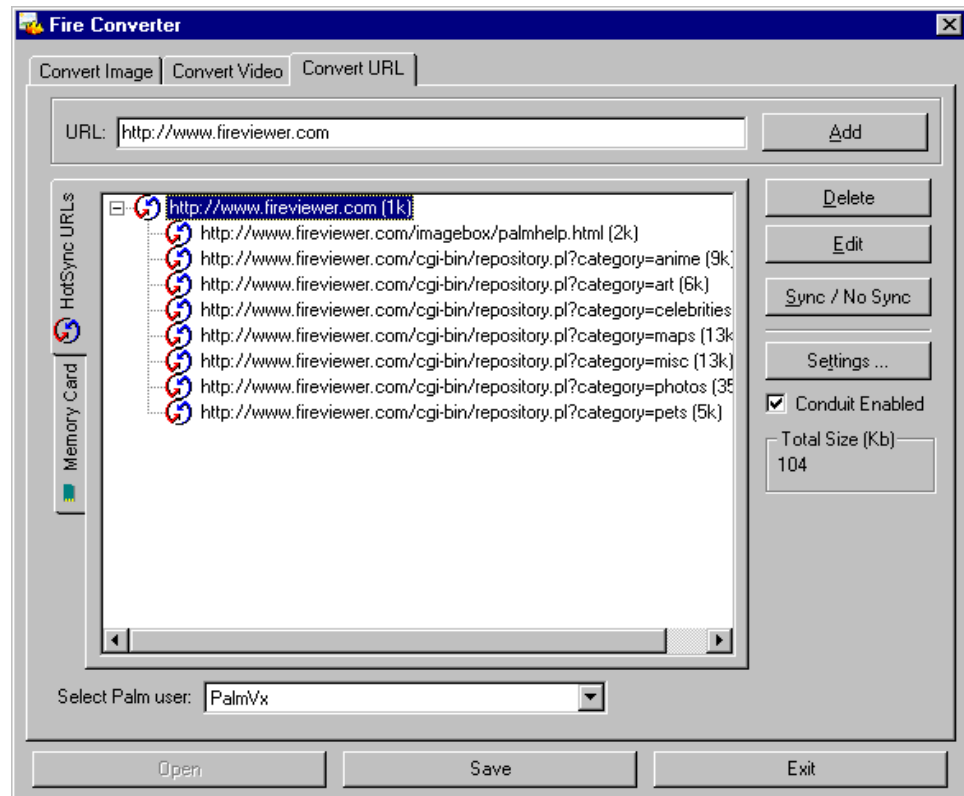
## Convert URL

Version 6.0 offers web archive support. Use the URL converter to convert a whole web site or a single page into a FireViewer pdb file. HotSync the pdb or copy it onto an SD card or memory stick in order to view it with fireViewer.

Open FireConverter 6.x.

Select the Convert URL tab. Next be sure that the HotSync URLs tab is selected from the tabs on the left.

Enter a URL in the URL address bar. Alternatively, while surfing a website, click on the FireConverter icon in the Internet Explorer tool



bar to open FireConverter and automatically enter the URL. Then click the Add button. The Add URL dialog box will open.

Enter the depth of the number of links you desire and the maximum size. You may also choose from the other options then click OK.

The FireConduit now prepares the web pages. Wait until it is done to proceed.

Select the palm user name to HotSync to if there is more than one user. Be sure to check the "Conduit enabled" check box on the right if it is not already. This will ensure that the web pages will be HotSynced. If you wish to not hotsync your webpages at any time, you can uncheck this box.

Click the save button on the bottom when you are done to save your web pages.

To delete a URL, highlight it by selecting it and click the delete button. If you would like to edit a URL, highlight it by selecting it and click the edit button. This allows you to change options such as the depth of the links and the maximum size.

If you have multiple URLs and wish to Hotsync only some of them, highlight the URLs you do not want to HotSync by selecting them, then click the Sync/No Sync button. The conduit is still enabled, but does not HotSync the URLs denoted with a red X.

If you use removable storage and would like to save content to your memory card, click on the Memory Card tab on the left side. Type the URL in the URL address bar. Or you may drag and drop a local HTML file to the URL converter. Then click the add button. The Add URL dialog box will open.

Enter the depth of the number of links you desire and the maximum size. You may also choose from the other options then click OK.

The FireConduit now prepares the web pages. Wait until it is done to proceed. Click on the Settings button and select the drive where your memory stick reader/writer is installed from the pull-down menu. Now you may click the Save to Card button.

Click exit on the bottom right when you are done converting URLs, or choose another tab to do other conversions.

## IV. Using FireViewer

FireViewer defines the standard for viewing graphics and hypertext documents on Palm Computing Platform handheld devices. Use it to view scrollable color and grayscale images, pictures, maps, and diagrams. FireViewer's remarkable 360-Degree-Drag feature makes larger-than-screen images easy to navigate and intuitive to use.

- ❑ InstallShield
- ❑ Get Started
- ❑ Main View
- ❑ Main View Menu Items
- ❑ View Images
- ❑ View Hypertext Documents
- ❑ View Videos
- ❑ Where to Find Images on the Internet
- ❑ Create Custom Maps for FireViewer from the Internet

## InstallShield

InstallShield installs FireViewer on to your computer. After the installation, HotSync FireViewer into your device.

## Get Started

From the Applications Picker, tap the 'FireViewer' icon to launch FireViewer. FireViewer always starts in the Main View.



## Main View

FireViewer's Main View displays a list of objects that can be viewed. These objects can be images, hypertext documents or video. Tap and release on an entry name to view the entry. By tapping and holding on an entry in this list, you get a popup menu showing all the operations you can perform on that entry.



### Edit Pop-up menu:

When using the Rename function, tapping the title bar will bring up the Edit Pop-up menu which allows you to undo (/U), cut (/X), copy (/C), paste (/P), select all (/S) as well as access the keyboard (/K) and graffiti help (/G).

This function is also available in Open Location and Advanced configuration from the Options menu.

## Main View Menu Items

The following FireViewer menus are accessible from the Main View by tapping either the list menu button on the silk screen or if using Palm OS v.3.5, tap FireViewer title in upper left corner.

### Info - Help (/H):

General help information

**Info - Registration:**

Go to [www.firepad.com/register](http://www.firepad.com/register) to submit your email address to be notified of updates and new products.

**Info - About:**

Copyright and version information

**Options – Open Location (/W):**

If you have a wireless connection, you can type a document address here to download, then press open.

Or chose My Links to access bookmarked links from your server.

**Note: FireViewer is pre-configured to use standard TCP/IP as supported by OmniSky, GoAmerica, Symbol Technologies or similar wireless connection. To configure your Palm VII or VIIx for wireless use with FireViewer, please Appendix B.**

**Options – Switch Local/Removable:**

This supports hardware with removable storage. To view FireViewer content on a removable media card, click “Switch Local/Removable” in the Options menu. To return to viewing content stored locally, click again.

**Options – Preferences (/R):**

Preferences are categorized in FireViewer 5.2 and above. The pull down menu in the upper right corner accesses all categories.

**Viewing Style:**

Buttons Scroll - Set the distance for scrolling images by pixels when using the hardware's buttons to scroll.

Sort Main List - Sort by Manual allows manual sorting of images by dragging them up and down the list. To drag, pen down on an image and drag it to the desired order and lift up the pen.

Sort by Alphabetic sorts images alphabetically. This sort order will overwrite the current sort order.

Link Style- allows you to choose either dotted underline or solid underline to identify links.

Check “Show history navigation arrows on local images” to have the use of the browser buttons on images not from the network.

Check ‘Invert when backlight is on’ to view images in reverse color scheme when backlight is on.

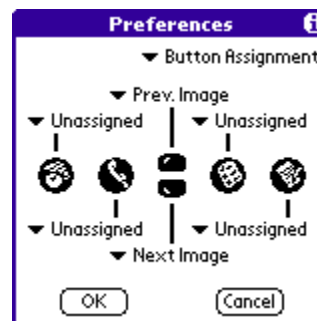
### FirePublisher Setup:

Use to enter or view your FirePublisher IP address, user name and password.

**Note: For PalmVII or VIIx, please see Appendix B.**

### Button Assignment:

The six hardware buttons on your handheld device can be assigned several tasks that will be performed when they are pressed while viewing or previewing an image. Unassigned buttons perform their original function. All buttons are returned to their normal behavior when you switch to another application.



If an image is larger than the display, Scroll Up, Down, Left and Right moves the image in the given direction. The amount an image is scrolled during a 'click' of a button can be adjusted. Scroll functions are not available when previewing an image.

Previous Image or Next Image: Move directly to the previous or next image in the image list without returning to the Main View. Alternately, write an 'A' in the graffiti area to go to the previous image or write a 'V' to go to the next image.

Set Anchor: Save the current scroll position. The scroll position can then be instantly jumped to by pressing the button that has been assigned the Go To Anchor function. Alternately, write an 'S' in the graffiti area to set an anchor position or write a 'G' to go to the anchor position. Anchor functions are not available when previewing an images.

View/Preview: Switch between viewing and previewing an image. Preview is not available for images that are the same size or smaller than the display.

Back: Return to the image list.

### Data Handling:

Check 'Back up content' if you want your content saved on your computer in the backup folder during a HotSync. Be aware that transferring many large images will significantly increase the time it takes for a HotSync to complete.

Check 'Exclude from Find' if you don't want the Find function to search for text in any images.

Max Cache Size - Default is half the available storage memory.

### Video:

Streaming video quality - Select the color or grayscale mode from the pull down menu for streaming video. Set more levels or bits-per-pixel for higher quality, fewer to get more frames per second.

Use compatible video methods - Causes FireViewer to disable accelerated techniques while showing videos. This conforms to the "Palm Powered Compatibility" requirements, but results in about 20% slower playback.

### Options – Restore Defaults:

Restores all preference items to default settings.

### Options – Purge Cache:

HotSyned, downloaded and main entries can be purged separately by checking the appropriate boxes.

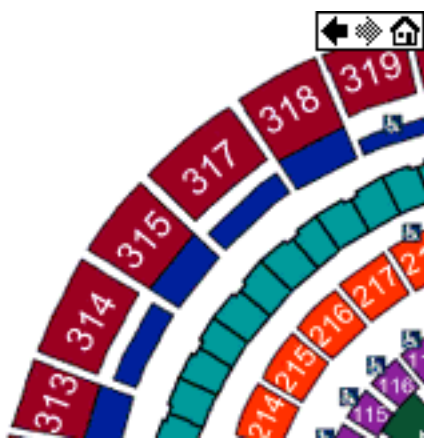
### View – Bookmarks:

To view previously bookmarked images or hypertext documents.

### Saved Form Requests:

Displays list of saved map queries requests that have not been submitted. You can submit a request immediately or delete it from this list. You can also view the results of previously saved and submitted forms. Internet connection needed to submit.

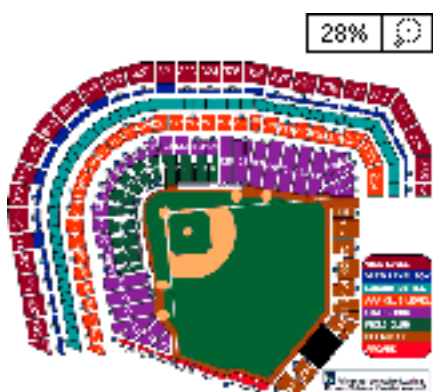
## View Images



Images are indicated by a flame icon to the left. Tap and release the image name from Main View to view the image. Tap and hold the image name to get a popup menu with these entries: View, Preview, Note, Details, Beam, Rename, Delete and (Reload is present in downloaded images).

If an image is larger than the handheld device's screen (bigger than 160 by 160 pixels), drag the stylus along the image to scroll it.

Just as on the main screen view, tapping or tapping and holding on an image causes a popup menu to appear with



these entries: Zoom Out, Details, Note, Beam, Bookmark, Delete, and Home. Save (makes download image show up on the Main View and is immune to cache purges) and Reload appear only in downloaded images.

In zoom out mode, an image that is larger than the handheld device's screen (160 by 160 pixels) is scaled to fit entirely within the screen. From this mode you can "zoom in" in increments to view the image in greater detail simply by tapping on the image. Each tap causes the image to be scaled up one step, centered on the tap point. During zoom out, a pallet of two "zoom" buttons is available in the upper right corner. The leftmost

button shows the degree of scaling as a percentage of the actual dimensions of the image. Tapping this button causes zoom out mode to be exited, and the image to be returned to full size. The rightmost button performs a "zoom out" operation, i.e., it scales the image down by one step until you are at the smallest zoom out size. You may also scroll/drag while in Zoom out mode.

The Image Details dialog box presents information about the image such as the Width, Height, Size and Type. You also have the option to change the image's category and set the image as private. (When the image is part of a hypertext document, those two operations are not available.)

Also, while viewing an image, tapping the menu icon on the silk screen will bring up the FireViewer menus. In addition to the Info, Options and View menus (described in the Main View Menu items section on pg. 20), there is a record menu with the following selections: Preview, Reload, Delete (/D), Beam (/B), Bookmark, Details, Attach note (/A), Delete note (/O) and Save.

There is a pallet of browser buttons available in the upper right corner to move back, forward and home. You must check the "Show history navigation arrows on local images" box in the preferences in order to see the browser buttons.

## View Hypertext Documents

Hypertext documents are indicated by a document icon to the left on the Main View. Tap and release the document name from the Main View to view the document. Tap and hold the document name to get popup menu with these entries: View, Details, Beam, Rename, Reload and Delete.

All hypertext pages contain a pallet of browser buttons in the upper right

corner. The available buttons are “Back”, “Forward” and “Home”, indicated by left arrow, right arrow and home icons respectively.

Just as on the main screen view, tapping or tapping and holding on a document causes a popup menu to appear with these entries: Details, Beam, Bookmark, Reload, Delete, and Home.

The Hypertext Details dialog box presents information about hypertext pages appearing in the Main View. This information is the page's category and privacy settings, which can be changed. Note that for a page not appearing in the Main View, i.e. a page that is directly or indirectly linked to such a page, this dialog is not available.

FireViewer now includes basic form support.

## View Videos

Videos are indicated by a Video icon to the left on the Main View. Tap and release the video name from the Main View to play the video. Tap and hold the video name to get a popup menu with these entries: View, Rename, Delete, Beam and Details.

Just as on the Main View, tapping or tapping and holding on a video causes a popup menu to appear with these entries: Play, Pause, Restart, Delete, Beam, Bookmark, Back and Home.

The Video Details dialog box presents information about videos appearing in the main view. This information has the video's Frames/s, Size, Type, Skip, Category and Private. Skip is available only if the video was created with this option. Skip reads either “Yes” or “No”. “Yes” means the Fast Forward and Rewind options are available and “No” means these options are not available for this video. The hardware's scroll up/down buttons perform fast forward and rewind respectively. The video's Category and Privacy settings can be modified in this dialog box.

## Where to Find Images on the Internet

Many web sites offer FireViewer images, including:

**MemoWare.com** - a unique collection of thousands of documents.

**PalmGear.com** - the one stop source for your Palm connected organizer.

**Handango.com** - the complete source for handheld and wireless computing for business professionals.

**Palmspot.com** - A Catalyst for Handheld Technology.

**Smaller.com** - a big place for small devices.

## **Create Custom Maps for FireViewer from the Internet**

There are several custom map creation sites on the Internet. Two of these are MapQuest ([www.mapquest.com](http://www.mapquest.com)) and Lycos Roadmap ([www.lycos.com/roadmap.html](http://www.lycos.com/roadmap.html)). They both create maps, which show up very well on the Palm device's screen without requiring any tweaking of the map's colors.

Once you have a map displayed on your web browser, save the map to your hard drive as a graphic file. With Internet Explorer, right click on the map and select "Save picture as...". With Netscape Navigator, right click on the map and select "Save image as...".

Use FireConverter to create a FireViewer image file (\*.prc) from the bitmap file, then use the Palm Install Tool to install the image on your handheld. Perform a HotSync operation, and you're ready to go.

## V. Appendixes

- ❑ FHTML Specification

This appendix contains information on a supported subset of HTML that FireViewer understands. The definitions may be useful for building your own web content viewable in FireViewer.

- ❑ FireViewer Notes

- ❑ Support

## Appendix A

### □ FHTML Specification

#### FHTML support in FirePublisher 1.0

FirePublisher converts HTML documents that are stored on web servers into a specific binary format suitable for presentation in FireViewer. Due to the limited displaying capabilities, screen size and CPU power of palm devices, the supported markup language of FireViewer is less powerful than HTML. FirePublisher maintains the general readability of existing HTML documents, however, this does not apply to all existing HTML documents.

This document summarizes the supported markup and provides the details of how to adapt a web site in order to make it suitable for transferring and viewing with FireViewer and FirePublisher.

#### Paragraphs

Tags:

`<P>` and `</P>`

Formatting:

FireViewer will display a blank line after each paragraph.

#### Line Breaks

Tags:

`<BR>` and `</BR>`

Formatting:

FireViewer will start a new line after parsing this tag.

#### Ordered and Unordered Lists

Tags:

`<UL></UL>`

`<OL></OL>`

`<LI></LI>`

### Formatting:

If surrounded by <UL>, <LI> inserts a bullet and a blank character.

If surrounded by <OL>, <LI> inserts a number as e.g. ( 1 ), ( 2 )...

## Hyperlinks

### Tags:

```
<A HREF= "url" >text</A>
```

Hyperlinks to other HTML and to images are supported. Hyperlinks to positions within a document are working; however, the relative position is ignored. Therefore the link

```
<A HREF= "http://www.firepad.com/index.html" >
text</A>
```

has the same result as

```
<A HREF= "http://www.firepad.com/index.html
#note" >text</A>
```

### Formatting:

Hyperlinks are formatted as underlined text.

## Images

### Tag:

```
<IMG HREF= "url" ALT= "test" >
```

### Formatting:

If an image tag is included in an HTML document that includes other HTML text or format specifications, the image will appear as a link to the image. The hyperlink text is built out of the text in the ALT attribute of the image tag. If there is no ALT attribute, it defaults to "<image>".

For example:

```
<HTML><BODY>
```

```
Here is an image <IMG HREF= "image.jpg"
ALT= "picture" > from our latest meeting.
```

```
</HTML>
```

results in

Here is an image picture from our latest meeting.

If there is no other HTML format or text in the current page, the image is shown instead of the HTML page. This mode is of particular importance because it allows the usage of Image Maps.

## Image Maps

In HTML, documents that do not include any text or text specific format definitions; a single image tag can be used in conjunction with an image map.

### Tags:

```
<IMG SRC= "url" USEMAP="#name">
```

This tag is a link to an image. The USEMAP attribute is optional, but when present, it refers to a previously defined client-side image map.

```
<MAP NAME= "name">
```

```
<AREA SHAPE="rect" COORDS="x1, y1, x2, y2"  
  HREF= "url">
```

Clicking on the areas defined in the image map will load the URL specified with HREF.

Only rectangular shapes are supported.

## Frames

### Tag:

```
<frame src= "url" name= "name">
```

### Formatting:

If frames are included in a document, they are displayed in the sequence as they appear. This is the same as filtering out the frame tags. If a frame is not included within the document and instead referenced by the "src" attribute, the frame is converted to a link. The link text will be the next text that is given in the "name" attribute. If there is no name attribute, the name defaults to "<frame>".

## Title

Tag:

```
<TITLE> and </TITLE>
```

Usage:

The title will be used for displaying the hyperlink in the object repository of FireViewer. A unique and good name supports simpler content access at the Palm client.

## Base

Tag:

```
<Base href= "URL ">
```

Usage:

The base tag may be used to identify the name space of the URLs included in the document.

## Entities

FHTML supports the entity references that are defined in the HTML 4.0 specification in section 24.2.1 (The list of characters). Basically this includes the common international characters as well the most common symbols. The characters are defined in [ISO 8859-1 \(Latin-1\)](#). In accordance with section 14 of [\[RFC1866\]](#), the set of Latin-1 entities has been extended by this specification to cover the whole right part of ISO-8859-1 (all code positions with the high-order bit set), including the already commonly used `&nbsp;`, `&copy;` and `&reg;`. The names of the entities are taken from the appendices of SGML (defined in [\[ISO8879\] <../references.html>](#)).

## Other non-recognized tags

FirePublisher filters out all other tags that are not mentioned in this document. Contents in between start and end tags, not defined as textual information, will be filtered as well.

For example, content that is stored in tables will be visible, but the format will be different than given by the table structures. In contrast, text that belongs to Java scripts or cascading style sheets will not appear at all.

## Appendix B

### □ FireViewer 5.2 and above Notes

#### Internet and FireViewer 5.2 & above

Please note your cache from downloaded objects will be purged when you upgrade to FireViewer 5.2 from an earlier version. Images and videos installed via HotSync or beaming will not be affected.

#### Palm VII or VIIx and FireViewer

Please be aware that FireViewer allows you to download much larger objects than you normally receive through your wireless connection. If your Palm.net account has a bandwidth limit, you will likely exceed it and incur costly overage charges if you browse more than a few pages with FireViewer.

In order to use your Palm VII or VIIx wireless connection with FireViewer, you must adjust your FirePublisher Setup preferences. To do so, launch FireViewer, and tap on the menu icon. Tap the "Options" menu; select the "Preferences..." menu item. Tap on the pull-down menu and select "FirePublisher Setup". In this pane, make sure the text under "Server:" is "www.fireviewer.com:5500" or "www.fireviewer.com", and check the box next to "Palm VII Wireless Network". When done, tap the "OK" button. You should now be able to use your Palm VII or VIIx wireless connection with FireViewer.

The responsiveness and speed of download functions through the Palm VII wireless network is dependent on the availability of Palm's proxy servers. You will notice dramatically improved service if you browse at off-peak hours, particularly after 6:00pm Pacific Standard Time on weekdays.

#### Memory Card and FireViewer 5.2 & above

FireViewer 5.2 now supports removable storage media on devices that implement the FAT 12/16 file system. This includes devices such as the Sony Clie with Memory Stick technology and the new Palm OS 4.0 Virtual File System. Devices implementing incompatible file systems are not supported (e.g. the TRGPro).

To prepare removable media for use by FireViewer, format it using your handheld device, and then mount it on your desktop as a volume using a removable media reader. Next, use standard desktop file system opera-

tions to create the directory “/Palm/Programs/FireViewer” and any subdirectories of it that you want, and then place FireViewer content in these directories. You can create FireViewer content using FireConverter and/or the FireViewer Conduit.

To view content, insert the removable media in your handheld, launch FireViewer, and then use the “Switch Local/Removable” menu item found in the “Options” menu. Alternatively, you can launch FireViewer first, and then insert the media - FireViewer automatically displays its contents. To return to viewing content stored locally, use the “Switch Local/Removable” menu item again, or eject the removable media.

FireViewer displays content on removable media in a manner similar to desktop file system browsers. The display shows FireViewer content (images, videos and hypertext pages) and directories. A web site that has been written to removable storage via the FireViewer Conduit is stored in a directory with a name derived from the site's URL, where the home page of that site is in a file named “index.pdb” within that directory.

To navigate the directory hierarchy, simply tap on a directory entry to display the contents of that directory, or tap on the directory icon in the upper right corner of the display to return to the parent directory of the directory you are viewing. Use the popup menu located next to the directory icon to navigate directly to any directory in the current path. To view content simply tap on its entry in the display.

The new Palm Desktop 4.0 software allows users of the Palm m500 and m505 to HotSync directly to the memory card.

## Appendix C

### □ Support

**Post** your questions or comments concerning FireViewer at <http://www.firepad.com/forum>.

Visit the [Products web page](#) for the latest FireViewer utilities, information and answers to frequently asked questions.

Firepad, Inc.  
The Firepad Building  
625 Ellis Street  
Mountain View, CA 94043

